

HOLDING PROOFING CHAMBERS

multifunctional machines used for cooling/freezing/holding/unfreezing and re-proofing until ready to be baked.



PRODUCTION FLEXIBILITY

Wide temperature range from -20 up to 45 °C enables production flexibility (whole gamut of cooling-heating possibilities: proofing, proofing retardation, slow proofing, fast cooling and freezing) – relative air humidity adjustable up to 98

CUSTOM-TAILORED FOR YOUR NEEDS

We make 9-, 12-, 15-, 18-, 21-, 24-, and 26-rack chambers and bigger if required. We are able to adapt existing space for holding/proofing.

MULTITASKING

Depending on the part of the “baking day,” the machine can be used as device serving multiple functions (from cooling, proofing, and storing, to re-cooling or freezing).





FEATURES

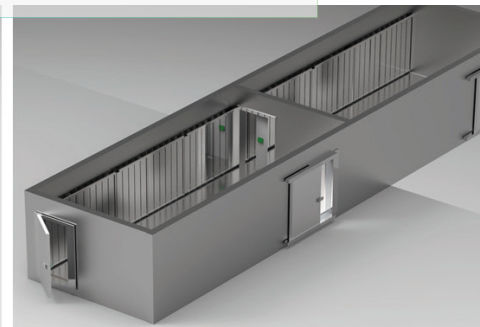
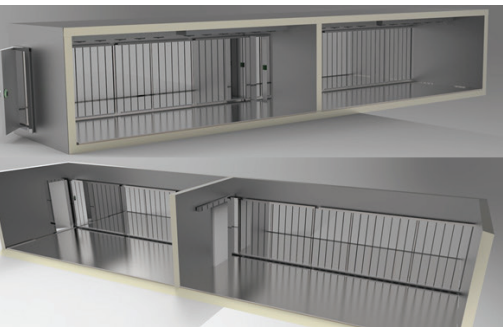
Expansion walls are responsible for even air distribution and circulation in whole chamber between racks and boards – it eliminates the risk of crusting.

Touch panel allows you to define up to 6 steps of each stage and to recall them at any given moment.



Special system for joining walls and floors (locks) guarantees better security measures against humidity ingress. Lighting – high-end LED panels. Custom tailored to our needs industrial evaporator, powered by electronic expansion valve, unifies the cooling/proofing process.

Multi-stage fan control assists the enzymatic effect developing taste and volume of the products.



CHAMBER SPECIFICATIONS EXAMPLE

1. Load: pieces of dough
2. Load temperature: $\leq +20^{\circ}\text{C}$
3. Chamber temperature adjustable between -15°C and $+40^{\circ}\text{C}$
4. Humidity adjustable up to 99%
5. Production of housing made of polyurethane filled plate (80mm thick) in "camlock" system with double-sided stainless steel hull
6. Floor made same as walls with additional 2mm-thick stainless steel flooring
7. Sliding door 1100x2000mm 1pcs
8. Chamber placed inside a room shielded from weather conditions
9. Length: 4400mm
10. Width: 2400mm
11. Height: 2650mm
12. Power supply: 3f 400V 50Hz 5x2,5mm² / 9,8 kW
13. Water: ½' 3 bar

